



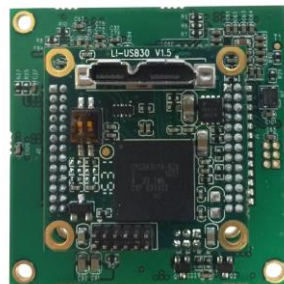
LEOPARD IMAGING INC

Rev. 1.4

LI-USB30-AR1335ICP3 Data Sheet

Key Features

- USB 3.0 Super Speed support
- YUV output without compression
- UVC compliance
- ON SEMI 13MP sensor AR1335
- ISP: ICP3
- Support M12 lens
- FOV (3 lens options)
 - Lens Part#: LA037B
FOV (D/H/V): 165 ° / 130 ° / 96 °
 - Lens Part#: DHB-5025
FOV (D/H/V): 102 ° / 88 ° / 70 °
 - Lens Part#: N118B05518W
FOV (D/H/V): 61 ° / 50 ° / 38 °
- Provide customization services
- USB +5VDC powered device
- Compact Size: 38 mmx38mm
- 2 Boards are stacked
- Part#: **LI-USB30-AR1335ICP3-xxxH**



Applications

- Machine Vision
- Medical Camera
- Video Conference
- Scientific Camera

SDK Supported

- Camera Tool Source Code in C#
- Capture & Display



Leopard Imaging Inc.




1130 Cadillac Ct., Milpitas, CA 95035, USA
Phone: +1-408-263-0988
Fax: +1-408-217-1960
Email: sales@leopardimaging.com
Website: www.leopardimaging.com

Ordering Information

Part#: LI-USB30-AR1335ICP3-xxxH

Note:

xxxH - 050H: FOV H 50°
 088H: FOV H 88°
 130H: FOV H 130°

LI-USB30-AR1335ICP3-050H	LI-USB30-AR1335ICP3-088H	LI-USB30-AR1335ICP3-130H
		
<p>Lens: N118B05518W Focal length: 5.5mm Aperture, F/#: 1.8 FOV(D): 61° FOV(H): 50° FOV(V): 38° Optical Distortion: 2.2% Mount: M12 x P0.5mm</p>	<p>Lens: DHB-5025 Focal length: 2.43mm Aperture, F/#: 2.0 FOV(D): 102° FOV(H): 88° FOV(V): 70° Optical Distortion: < 5% Mount: M12 x P0.5mm</p>	<p>Lens: LA037B Focal length: 2.05mm +/- 5% Aperture, F/#: 2.8 +/- 5% FOV(D): 165° FOV(H): 130° FOV(V): 96° Optical Distortion: -80.9% Mount: M12 x P0.5mm</p>



Leopard Imaging Inc.

1130 Cadillac Ct., Milpitas, CA 95035, USA
 Phone: +1-408-263-0988
 Fax: +1-408-217-1960
 Email: sales@leopardimaging.com
 Website: www.leopardimaging.com

Specification

General Behavior		
Video Resolution @ Frame rate	4208 x 3120 @ 8 fps 3840 x 2160 @ 13 fps 1920 x 1080 @ 26 fps 1280 x 720 @ 30 fps	
Responsivity	4700 e ⁻ /lux-sec	
Dynamic range	10 bit	
Interface (Optical)		
IR cut filter (on lens)	Yes, 650nm IR cut filter	
Sensor specification	ON SEMI AR1335 13MP Image Sensor	
Format	1/3.2"	
Resolution	H:4208, V:3120	
Pixel size	1.1 um Back Side Illuminated (BSI)	
Chief ray angle (CRA)	11°	
Lens mount	M12 lens mount support	
M12 Lens	Support M12 x P0.5mm lenses	
Interface (Electrical)		
Interface	USB 3.0	
Supply voltage	USB 3.0 +5 VDC power source	
Current consumption	380mA	
Interface (Mechanical)		
Dimensions	AR1335 sensor board	L: 38 mm, W: 38 mm
	USB 3.0 main board	L: 26 mm, W: 26 mm
Mass	18 g	
Adjustment (Manual)		
Shutter	Support	
Gain	Support	
Adjustment (Auto)		
Shutter	Support	
Gain	Support	
Environmental		
Max. temperature (operation)	-30 °C ~ 70 °C	
Max. temperature (storage)	-40 °C ~ 85 °C	
Max. humidity (operation)	20 % ~ 80 %, relative, non-condensing	
Max. humidity (storage)	20 % ~ 80 %, relative, non-condensing	

