

# Flashlight Camcorder & CMS



H.264/H.265 1080P recording	Wifi 2.4/5GHz, 3G/4G, GPS, RFID tag reader	2.8-8mm 2.8X Auto Focus	Auto backup charger
Microphone and buzzer	0.008 LUX	8 hours, 128G/1080P	1.5" LCD + OSD
Digital image stabilization	Changeable 5V/ 5500mAh Li-ion battery	White light LED + IR LED 30m	IP66
720P/15fps upload to CMS	1080P/30fps backup	Guard patrol central manage software	Alloy Aluminum casing

## Feature

### A6 Flashlight Camcorder

- Professional security patrol flashlight built in video recording
- Support 3G/4G, Wifi, GPS (Google Map) and RFID tag reader
- Remote upload video 720P/15fps to CMS for instant tracking automatic backup video 1080P/30fps in central room
- 2.8-12mm Auto Focus lens with star light sensor
- DIS function
- Auto backup charger
- Changeable SD card up to 128G
- Changeable long life Li-ion battery 5500mAh
- Perfect for security guard patrol, outdoor adventure, law enforcement, military, industrial maintenance and surveillance

### Operation Hours (continuous recording, 1920 x 1080P)

Version	Hours	Status
Wifi	4.5	Wifi / GPS / LCD / IR ON
	7.5	Wifi / GPS / LCD ON
	7.7	Wifi / GPS ON
	8.0	Wifi ON
3G/4G	4.0	3G 4G / GPS / LCD / IR ON
	6.5	3G 4G / GPS / LCD ON
	6.7	3G 4G / GPS ON
	7.0	3P 4G ON

Standby: 31 days

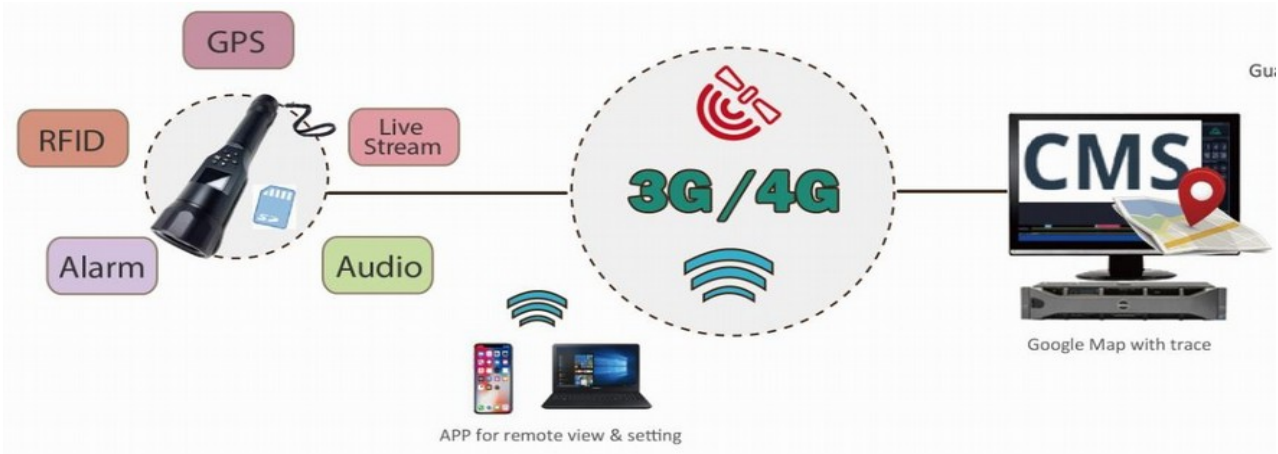
### Digital image stabilization (DIS)



### CMS04/09/16/25/36 Central Management Software

- Customized matrix and group setting
- Multi Monitor for live, playback, E-map and event manager
- Remote viewer for live monitor and setting
- E-map support google map with guard tag
- Preview for event playback

## Working Structure



## CMS Information



- 1/4/9/16/25/36 splitted channel
- Quick function: Loop / Full screen / Save Jpeg / EPTZ / Google map
- Audio

- Status for
- 3G4G
- Wifi
- GPS
- Battery
- SD card

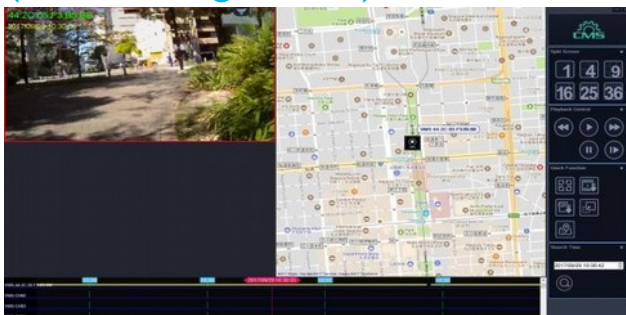
## GPS tracking on Google Map



## APP for remote view and setting



## Timeline bar playback me (GPS tracking / Audio)



## Auto backup & charging at the same ti (no need setup)

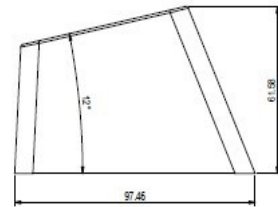
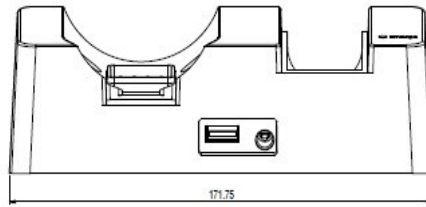
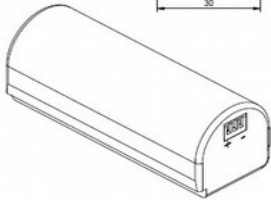
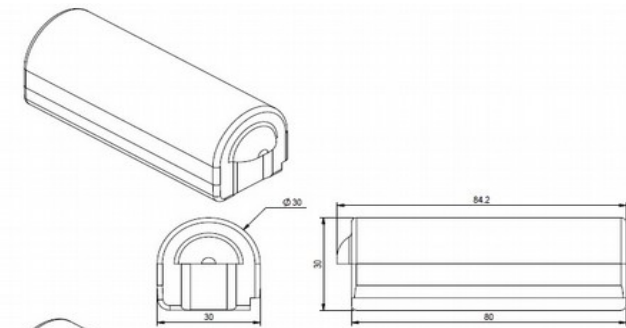
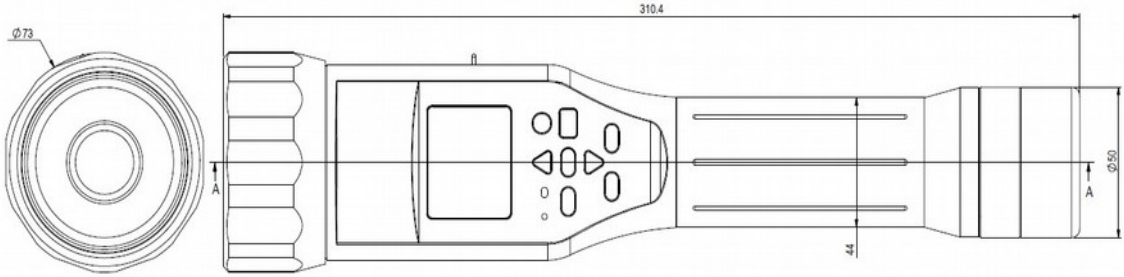


# Specification

## A6 Flashlight Camcorder

	Compression	H.265/ H.264
	Resolution	Record: 1920x1080@30fps, 1280x720@30fps Liveview: 1280x720@20fps, 640x480@20fps
	Firmware Upgrade	Upgrade firmware from SD card
	Image Snapshot	Yes
	Record Quality	Adjustable for Best / High / Medium / Low
	Trigger Action	Save to SD card, Instant Report to CMS
	LCD	1.5 inch LCD screen resolution 320x240
	Sensor	1/2.9" Megapixel CMOS sensor SONY IMX291 Star Light
	Optical Lens	Motorized lens 2.8~8mm / optical 2.8X zoom / F1.6
	View Angle	56~99°(H), 31~52°(V)
	T-WDR	Yes
	Min Illum	0.01 Lux (Color), 0.008 Lux (B/W)
	LED / Range	2pcs x strong White Light LED + 2pcs IR LED / 20M & 30M Switchable White light / Flash white light / IR light selectable
	Day / Night	Mechanism IR cut Filter
	Intelligent Function	T-WDR / DIS / Motion Detection
	Video Transfer	USB 2.0
Wireless	Wifi	IEEE 802.11b/g/a/n/ac support 2.4/5GHz
	GPS	System: GPS, QZSS Frequency: L1 1575.42MHz, C/A code Channel: Support 66ch (22 tracking, 66 acquisition)
	RFID (Optional)	Built-in RFID Reader / Frequency 125KHZ
	3G/4G (Optional)	Qualcomm / EC25
Storage	Storage Capacity	Micro SD Card 8G/16G/32G/64G/128G Changeable
	Recording Trigger	Button Trigger
	Video Format	MPEG4
	Video Playback	Camera playback / Backup to CMS for playback
	Overwrite	Yes, Automatically
	Protection	Yudor player
Audio	Input	Microphone built-in (One way)
	Output	Buzzer built-in
Charging Set	Power Supply	3A DC 5V, DC Jack, can charge battery individually
	Transmission Interface	USB 2.0, Type-A
	Charging Time	3.0 hours: Flashlight Camera 5.5 hours: Battery
General	Power Consumption	DC 5V power supply, 5500mAh Li-ion battery, changeable design
	Dimension	73mm(φ) x 310mm(L)
	Materials	Aluminum Alloy
	Weight	Flashlight cam: 800g / Charging Set: 340g
	Operation Temp.	-10°C ~ +50°C
	Operation Hours (Continuous Recording, 1920 x 1080P resolution)	Standby Time: 31 day <b>Wifi Version:</b> 4.5 hours: camera with WIFI / GPS / LCD / IR ON 7.5 hours: camera with WIFI / GPS / LCD ON 7.7 hours: camera with WIFI / GPS ON 8.0 hours: camera with WIFI ON <b>3G LTE Version:</b> 4.0 hours: camera with 3G 4G / GPS / LCD / IR ON 6.5 hours: camera with 3G 4G / GPS / LCD ON 6.7 hours: camera with 3G 4G / GPS ON 7.0 hours: camera with 3G 4G ON
	Waterproof	IP66

# Dimension



# Specification

## CMS Central Management Software

	Split Screen	1,4,9,16,25,36, customized
	Switch Page	By group
	Auto Swap	By page / Schedule setup
	Snapshot	Single channel snapshot
	Play Audio	Audio function, adjustable volume
	EPTZ	Flip / Mirror / Digital zoom
	Display	Name / Date / Time
System	Date Format	yyyy/mm/dd
	Multi Monitor	Multi-live / Playback / E-map / Event manager/ Setup
	Setting File	Download / Upload
Alarm	Event Type	Motion / Alarm in / Video loss / DI / Device setting changed
	Triggered Action	Icon on live / Pop-up / E-map, Event log, Mail, Play sound
	Schedule	Yes
User	Group	Admin / User
	Authority Control	Live / Playback / E-map / Event list / Setup / User management / Device setting / Alarm management / Recording / PTZ control
	Account	No restriction
	Access List	White list / Black list
E-map	Map	Google Map
	Device	Flashlight Camcorder and alarm device
	Event	Icon flickering, marked by alarm ignoring times
Playback	Split Screen	1,4,9,16,25,36, customized
	Switch Page	By group
	Type	Local playback
	Search	Event search / time search
	Control	Play / Pause / Fast forward / Fast rewind / Step by step
	Backup	Time point backup
	Export	Image: JPG / Video: AVI
System Required	CPU & RAM	Single monitor: i3, 4G RAM, Multiple monitor: i5, 8G RAM
	OS	Window 7,8,10
	Monitor Resolution	Min: 1280x1024 or 1366x768; Recommend: 1920x1080
	Network Bandwidth	Min 40Mbps



# Hardware Overview

