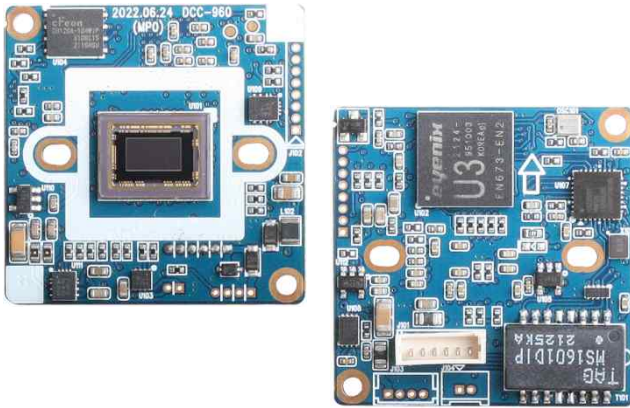


DCC-960

CMOS IP VIDEO MODULE



Main Features

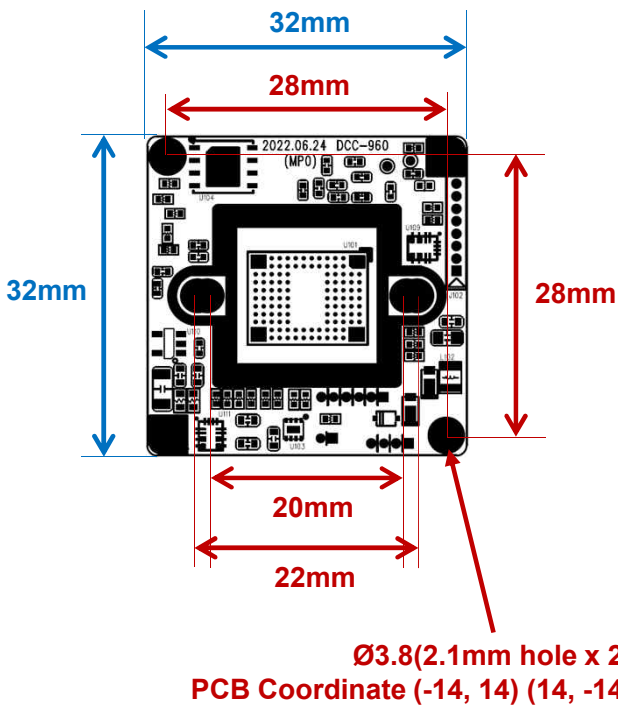
- 1/2.8" 2.9µm Pixel Progressive Sony Starvis CMOS Sensor
- 2 Mega Pixels – Maximum 1080p (1920x1080)
- Mountable Lens: Fixed, Pinhole, Manual VF Lens
- TDN ICR Mechanism Available
- WDR, DSS, 3D-NR Supported conditionally
- Onvif Ver. 17.06 Compatible
- Supported Video Codec: H.264, MJPEG
- CMOS IP Video Module (32x32mm 1-board)



Specification

Model	DCC-960
Signal System	IP (Network)
Pickup Device	1/2.8"(D-6.46mm) 2.12M Sony CMOS Sensor
Scanning System	Progressive Scan (16:9)
Sync. System	Internal
Total Pixels	2.16MP [1,945(H)x1,109(V)]
Active Pixels	2.12MP [1,937(H)x1,097(V)]
Min. Illumination	0.1Lux, 0.05(ICR on), 0.003Lux (DSS on)
Mechanical ICR	Available (Option)
Video Out 1 (RJ45)	Up to 30fps @ 1920x1080p (1920x1080, 1280x720, 800x600, 704x480, 640x400, 640x480, 640x360, 320x240)
Video Out 2	N/A
Lens	Option
Lens (Mount)	Board Mount(M12)
OSD	Via Webpage Viewer
Camera Title	Off, On(Max. 8 Characters)
Language	English
White Balance	AUTO, AUTOext, Preset, Manual
BLC	Off, BLC, HLC, WDR(Low, Middle, High) WDR can't work together with 3D-NR
Day & Night Mode	Auto, Color, B&W, Ext.
Electronic Shutter	1/25(30)~1/30,000sec
Noise Reduction	Off, On(Low, Middle, High) DNR can't work together with WDR
DSS(Sens-up)	X32
Mirror	Off, On(Mirror, Flip)
Other Features	Motion Detection(4 Zones), Privacy Mask(8 Zones), Defog, Gamma Etc.
Network Protocol	TCP/IP, UDP/IP, RTP, RTSP, RTCP, NTP, HTTP DHCP, FTP, SMTP, DNS, DDNS Onvif 17.06 Compatible
At-a-time Access	Maximum 3 users
Video Codec	H.264, MJPEG (Duplex Streaming)
Sensor In/Alarm Out	N/A
Audio Line In/Out	N/A
Power Source	DC12V / POE
Power Consumption	Less than 1.7 Watts (140mA)
Operating Temp.	-10℃ ~ 55℃ (Humidity :0%RH ~ 90%RH)
Size (mm)	32(W) x 32(D) – 1 Board
Weight	5 g (Without OLPF)

Dimension



Option

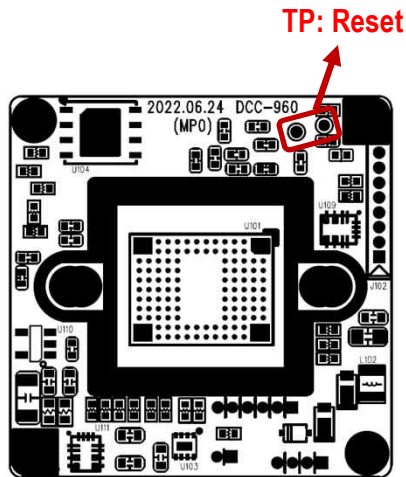
- OLPF
- Lens

DCC-960

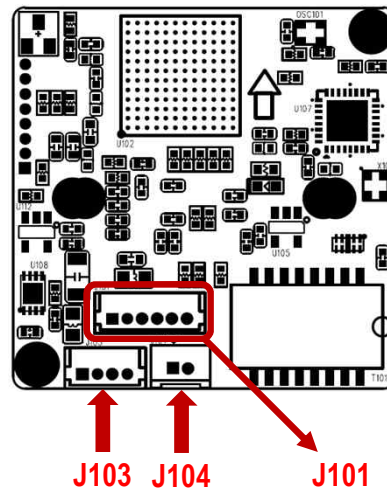
CMOS IP VIDEO MODULE

Pin Connections

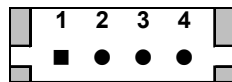
Board Front



Board Rear



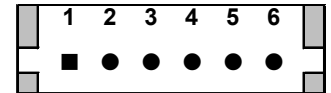
J103 - LED



No.	Pin Item	No.	Pin Item
1	LED VCC	3	EXT_DN
2	GND	4	LED_CTL

Wafer DIP type: **1.25mm pitch – 4 pin**
 Manufacturer: **Molex**
 MFG Part Number: **53047-0410**

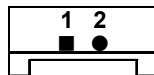
J101 - Ethernet



No.	Pin Item	No.	Pin Item
1	DC 12V	4	RXD + (Ethernet)
2	GND	5	TXD - (Ethernet)
3	RXD - (Ethernet)	6	TXD + (Ethernet)

Wafer DIP type: **1.25mm pitch – 6 pin**
 Manufacturer: **Molex**
 MFG Part Number: **53047-0610**

J104 – TDN ICR



No.	Pin Item	No.	Pin Item
1	ICR (+)	2	ICR (-)

Wafer DIP type: **1.25mm pitch – 2 pin**
 Manufacturer: **Yeonho**
 MFG Part Number: **12512WS-02B**

TP



No.	Pin Item	No.	Pin Item
1	RESET (Factory Default)	2	GND

DCC-960

CMOS IP VIDEO MODULE

- **IP camera connection**

Connect LAN cable to RJ45 jack of camera

Connect the other end LAN cable to RJ45 jack of router or hub

If you are not using POE switcher to provide the power to the IP camera, connect regulated a DC12V power adaptor to the IP camera.

Wait for about 30 seconds until the camera initialization is completed

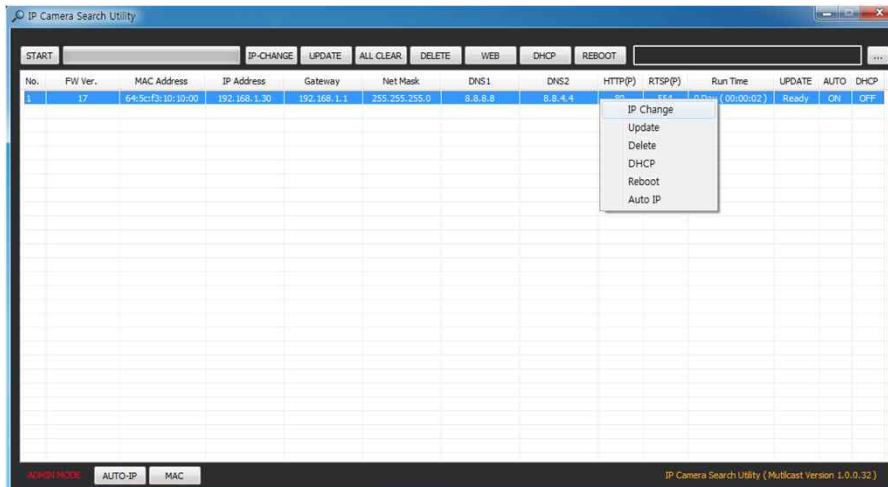
Factory Default IP address is **192.168.1.30**

Factory Default ID & Password are **admin / admin.**

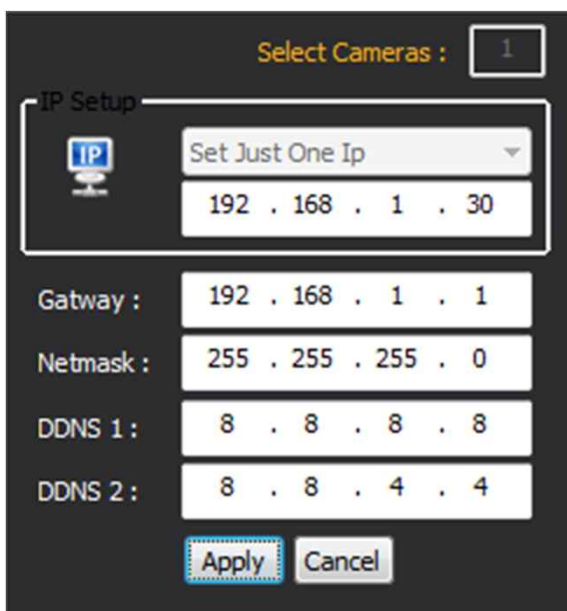
- **Using IP Search**

You can simply change the IP address by using ‘IP Search’ provided.

Run IP Search as administrator. Click “START” button when the IP camera is connected to your PC or network, all IP address will appear.



Choose & change the IP address of camera you want to change and click “IP change”



After click the “IP Change” button left window will be appeared. Once you click “Apply” button, the camera will reboot for 10second.

After reboot the camera, the changed IP address will be applied and appeared.

- **Checking Video by Web Viewer**

Run web browser and Input the IP address which taken from IP Search.

- **Supported O/S & Web Browser**

- O/S : Windows7, 8, 10, MAC

- Browser : Internet Explorer 11 or higher, Chrome , Firefox, Safari, Opera